

On the Presence of *Neurateles papyraceus* RATZBURG (Hymenoptera: Ichneumonidae, Orthocentrinae) in the Romanian Fauna

Irinel CONSTANTINEANU, Raoul CONSTANTINEANU & Camil Ștefan LUNGU-CONSTANTINEANU

Summary

In this paper the authors present a new genus (*Neurateles* RATZ.) and a new species (*Neurateles papyraceus* RATZ.) for the Romanian fauna. Also, the following three bark beetles species: *Ips typographus* (L.), *Pityogenes chalcographus* (L.) and *Polygraphus polygraphus* (L.) are new hosts in Romania for *Neurateles papyraceus* RATZ.

Rezumat

Prezența speciei *Neurateles papyraceus* RATZ. în fauna României

În această lucrare autorii prezintă un gen (*Neurateles* RATZ.) și o specie (*Neurateles papyraceus* RATZ.) noi pentru fauna României. De asemenea, următoarele 3 specii de gândaci de scoarță (Ipidae): *Ips typographus* (L.), *Pityogenes chalcographus* (L.) și *Polygraphus polygraphus* (L.) sunt gazde noi în România pentru *Neurateles papyraceus* RATZ.

Keywords: Ichneumonidae, new genus, new species, Romanian fauna, bark beetles

Introduction

In this paper the authors present the genus *Neurateles* RATZ. and the species *Neurateles papyraceus* RATZ. new for the Romanian fauna. This species was reared from the following three species of bark beetles: *Ips typographus* (L.), *Pityogenes chalcographus* (L.) și *Polygraphus polygraphus* (L.). They are new hosts in Romania for *Neurateles papyraceus* RATZ.

FAMILY ICHNEUMONIDAE LATREILLE Subfamily Orthocentrinae DAVIS, 1897

Genus *Neurateles* RATZBURG, 1848

Neurateles RATZBURG, Ichn. d. Forstins., 2, p. 86.

Type species: *Neurateles papyraceus* RATZBURG.

Neurateles FOERSTER, 1868, Naturh. Ver. Rheinl. Verh., 25: 159, 218.

Length: 2.5 - 3.5 mm. Front wing: 2.2 - 3.0 mm. long. Body entirely compressed. Clypeus flush with surface of face or more or less raised, its apex truncate, exposing labrum. Mandible falcate with a long upper tooth and on its inner edge a very small lower tooth. Antennae are very short, with only 20 - 21 flagellar segments. Mesoscutum nearly always

partly hairless and rarely with hairs on its entire surface. Notauli absent. Prepectal carina absent. In a few species is a little weak wrinkling in the common position of the upper end of the prepectal carina, but no definite carina. Pleural carina entirely or largely absent, often replaced in part or entirely by a shallow groove. Propodeum without carinae, except for apical partly of lateral carina, the apical area of propodeum never completely bounded by carinae. Nervellus weakly to moderately reclivous, not intercepted. Recurrent vein is very fine. First tergite broad to very narrow, in many species narrower at apex than at spiracle. Hairs on abdomen moderately sparse to very sparse or almost absent. Abdomen usually compressed, often very strongly compressed and in female elongate and extensible. The entirely body is compressed. Ovipositor sheaths upcurved, polished and with very sparse hairs on entirely its length, about as long as apical depth of abdomen. Ovipositor upcurved alike a hook under the abdomen apex.

Neurateles is a moderate sized genus.

It occurs in the Holarctic and Neotropic regions. **New genus for the Romanian fauna.**

Neurateles papyraceus RATZBURG, 1848 (fig. 1)

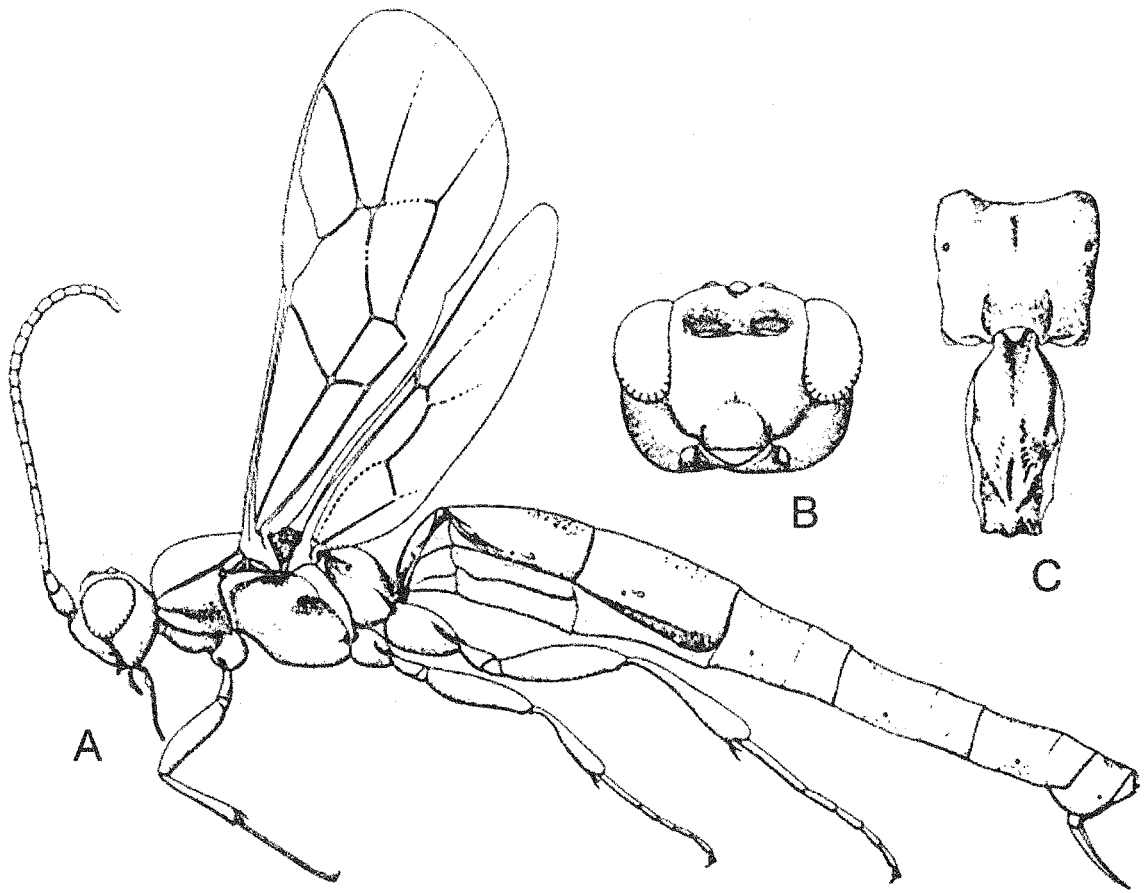


Fig. 1. *Neurateles papyraceus* RATZ., ♀: A = adult, lateral view; B = head, front view; C = propodeum and the first tergite (see H. TOWNES, 1971)

Material: 1 ♀ reared on July 28, 2000 from a larva of *Ips typographus* (L.), collected on July 7, 2000, Borca commune, Suceava county; 1 ♀ reared on July 29, 2000 from a larva of *Polygraphus polygraphus* (L.), collected on July 5, 2000, Grintieșu Mic, Ceahlău commune, Suceava county; 1 ♀ reared on July 29, 2000 from a larva of *Pityogenes chalcographus* (L.), collected on July 5, 2000, Izvorul Alb, Ceahlău commune, Suceava county.

♀. Length: 1.5 - 1.75 mm. Body entirely smooth, polished, except frons, only on abdomen with a fine rugose sculpture near abdominal edge. Head very narrow, compressed as entirely body. Antennae strong, very short, with 20-21 flagellar segments. Frons broad, strongly punctate. Vertex wide. Notauli absent. Propodeal carination is reduced or almost absent, except an apical part of lateral carina, the apical area of propodeum never completely bounded by carinae. Areolet absent. Nervellus weakly to moderately reclivous, not intercepted. Abdomen sessile, very long, with dorsal edge at the basis unexpected raising. Ventral fold on 1 - 3 sternites, being very high on 1 - 2 sternites. Ovipositor as long as 1/6 of abdomen.

Black or brown-black. Antennae and mandible brownish, scape a little lighter. Yellow palpi. Legs brownish-yellow, with black hind coxae.

Hosts: *Pissodes notatus* (F.) (Col., Curculionidae), *Plastociara pictiventris* KIEFF. (Col., Lycoriidae), *Pictyokteines vorontzovi* (JACOBS.). *P. spinidens* REITT., *Pityogenes chalcographus* (L.), *Polygraphus polygraphus* (L.), *Ips typographus* (L.) and *Crypturgus cinereus* (HRBST.) (Col., Ipsidae).

Ips typographus (L.), *Pityogenes chalcographus* (L.) and *Polygraphus polygraphus* (L.) are new hosts in Romania for *Neurateles papyraceus* RATZ.

Geographical distribution: It is a rare palaearctic species. Germany, Czech Republic and Poland.

New species for the Romanian fauna.

Conclusions

1. In this paper the authors present a new genus, *Neurateles* RATZ. and a new species, *Neurateles papyraceus* RATZ., for the Romanian fauna.
2. *Ips typographus* (L.), *Pityogenes chalcographus* (L.) and *Polygraphus polygraphus* (L.) are new

hosts in Romania for *Neurateles papyraceus*
RATZ.

REFERENCES

- ATANASOV A. Z. et al. 1981. Opređeliteli nasekomâh evropeiskoi časti SSSR, 3 (Pereponciatokrâlye) (129), (Redaktor vzp. Kasparyan D. R.), 688 pp., Izd. Nauka, Leningrad.
- BALAZY S. & MICHALSKI J. 1962. Pasoży kornikórv (Coleoptera, Scolytidae) z rzedu błonkówek (Hymenoptera) występujące w Polsce, Forestalia Polonica PAN, 13 (1): 71-139.
- KROMBEIN K. V. Et al. 1979. Catalog of Hymenoptera in America North of Mexico, 1: 1-1198 (Symphyta and Apocrita (Parasitica)), Smithsonian Institution Press, Washington, D.C.
- OBRTEL R. 1959. *Neurateles papyraceus* RATZ., Folia Zool., 8.
- RATZEBURG J.T.C. 1848. Die Ichneumoniden der Forstinsecten, 2: 1-238, Berlin. Schmiedeknecht O. 1911-1927. Opuscula Ichneumonologica, 5 (29-45): 1-3570, Blankenburg i. Thür.
- Townes H. 1971. The Genera of Ichneumonidae, Part 4, Mem. Amer. Ent. Inst., 17: 1-372, Ann Arbor, Michigan.
- Irinel CONSTANTINEANU, Raoul CONSTANTINEANU, Camil Ștefan LUNGU-CONSTANTINEANU
Universitatea "Al. I. Cuza", Fac. de

Institutul de Cercetări Biologice Biologie
Bd. Carol I Nr. 20 A Bd. Carol I Nr. 20 A
RO - 6600 Iași, Romania RO - 6600 Iași, Romania

Received: 1.03.2002

Accepted: 4.04.2002

Printed: 24.06.2002