

## Rove Beetles (Coleoptera: Staphylinidae) from the collection of the Oltenia Museum Craiova

Melania STAN & Cornelia CHIMIȘLIU

### Rezumat

#### Staflinide (Coleoptera: Staphylinidae) din colecția Muzeului Olteniei Craiova

Lucrarea prezintă 55 de specii staflinide incluse în 26 genuri, 10 triburi și 8 subfamiliile, conservate în colecția Muzeului Olteniei Craiova. Speciile provin din 33 situri colectare județele: Dolj, Gorj, Mehedinți, Vâlcea, Tulcea și Constanța, predominând materialul colectat din județul Dolj. Specia *Aleochara breiti* GANGLBAUER, 1897 este menționată pentru prima dată în fauna României.

**Key words:** rove beetles, Oltenia Museum, Craiova.

### Introduction

With about 45,000 described species, the family Staphylinidae represent one of the most speciose beetle families. In Romania, 1,240 species have been reported (STAN 2004). Rove beetles are a successful group of insects, occupying almost all terrestrial habitats, ranging from tropical forest to tundra areas. A few morphological and biological features make them to be more competitive than other organisms. The most rove beetles have developed membranous wings and they are good winged for longer or shorter distance. Many from the successful subgroups have developed defensive glands. Because of their small and narrow body with short elytra and flexible abdomen are able to live and move in habitats such as the ground litter (with abundant decaying organic matter) which is not accessible for the robust and less flexible organisms.

Like ground beetles, most rove beetles are predators of other insects and live on or in the soil, in ground litter, moss, or in decomposing organic matter. Rove beetles prefer moist habitats along the margins of streams, lakes and snowfields. Some species are present in dung (coprophilous species), in carrion (necrophilous species), other live as larva and adults on fungi (mycetophilous species), while other species are associated with ant and termite nests (mirmecophilous species), with bird nests (nidicolous species), with mammals burrows (phileophilous species). Some species are specialized feeders on pollen (floricolous species). Others spe-

cies live in caves, in intertidal and coastal habitats, saline flats or found in a variety of habitats around human dwellings.

### Material and method

The studied material comes from the collection of Oltenia Museum and was collected during 1951-2005. The specimens reached us through dr. Cornelia CHIMIȘLIU.

The paper presents the list of collection sites in an alphabetical order and the list of collectors who have contributed to the enrichment of the entomological collections.

The systematic order and the nomenclature of the species are presented according to V. ASSING & M. SCHÜLKE, 2001. The classification at the tribe level is according to HERMAN's Catalogue, 2001, and for Aleocharinae the classification at the tribe level is according to A. NEWTON & M. THAYER, 1992. For each species the collecting site is presented, collecting date (in chronological order), number of specimens and the collector's abbreviated name.

### Results and discussion

55 species were identified. They belong to 26 genera, 10 tribes and 8 subfamilies. The situation of the number of tribes, genera, species and specimens is presented in the table 1.

Table 1

Number of taxonomical classes				
Subfamily	Tribes	Genera	Species	Specimens
Omalinae	1	1	1	1
Oxytelinae	1	3	5	8
Oxyporinae		1	1	4
Syteninae		1	2	5
Paederinae	1	2	4	11
Staphylininae	2	12	33	103
Tachyporinae	1	2	2	15
Aleocharinae	4	4	7	4
<b>Total</b>	10	26	55	160

The identified species come from 33 collecting sites and 6 counties: Dolj (DJ), Gorj (GJ), Mehedinți, (MH) Constanța (CT), Tulcea (TL) and Vâlcea (VL). Most specimens were collected from Dolj county.

### The list of collecting sites

Almăj (DJ), Bahna Valley (MH), Baia de Fier (GJ), Bârsești (GJ), Bucovăț (DJ), Bratovoesti (DJ), Ciuperceni (GJ), Sohodol Gorges – Vâlcan Mts (GJ), Craiova (DJ), Craiova – Botanical Garden (DJ), Craiova – Obedeau (DJ), Danube Delta (TL), Desa (DJ), Drobeta Turnu – Severin (MH), Dubova (MH), Eșelnița (MH), Galbenu Valley (GJ) (2 km upstream of Muierii Cave touristic complex), Irimești (VL), Leu (DJ), Malovăț (MH), Mamaia (CT), Melinești (DJ), Mischii (DJ), Negoii (DJ), Novaci (GJ), Prunet (DJ), Răcari (DJ), Râncea (GJ), Secui (DJ), Segarcea (DJ), Șimnic (DJ), Tismana (GJ), Verbicioara (DJ), Vodița Valley (MH).

### Abbreviations:

Collector's name: B.E. – BOTU EUGENIA; C.C. – CHIMIȘLIU CORNELIA; F.G. – FILCU GHEORGHÎȚA; F.I. – FIRU ION; L.N. – LILA NARCISA; V.A. – VIȘAN ANETA.

### OMALIINAE MacLeay, 1825

#### Anthophagini Thomson, 1859

##### *Anthophagus* Gravenhorst, 1802

*Anthophagus alpestris* Heer, 1839 – 1 ex. Râncea, 22 VII 1982, C.C.

### OXYTELINAE Fleming, 1821

#### Oxytelini Fleming, 1821

##### *Oxytelus* Gravenhorst, 1802

*Oxytelus piceus* (Linnaeus, 1767) – 1 ♀ Segarcea, 4 X 2001, C.C.

*Oxytelus laqueatus* (Marsham 1802) – 1 ♂ Galbenu Valley, 8 VIII 2005, C.C.

### *Anotylus* Thomson, 1859

*Anotylus politus* (Erichson, 1840) – 1 ♀ Craiova-Obedeau, 11 VIII 1974, F.I.

*Anotylus sculpturatus* (Gravenhorst, 1806) – 1 ♂ Almăj, 4 V 2000, C.C.; 2 ♂♂, 1 ♀ Segarcea, 4 X 2001, C.C.

### *Platystethus* Mannerheim, 1830

*Platystethus arenarius* (Geoffroy, 1785) – 1 ♀ Galbenu Valley, 8 VIII 2005, C.C.

### OXYPORINAE Fleming, 1821

#### *Oxyporus* Fabricius, 1775

*Oxyporus rufus* (Linnaeus, 1758) – 1 ex. Craiova, 1 V 1975, F.I.; 3 ex. Turnu-Severin, 19 VI 1976 și 21 VIII 1978, B.E.

### STENINAE MacLeay, 1825

#### *Stenus* Latreille, 1797

*Stenus ater* Mannerheim, 1830 – 2 ♀♀ Craiova-Obedeau, 30 IX 1974 și 15 VIII 1975, F.I.; 1 ♀ Irimești, 8 VI 1975, F.I.; 1 ♂ Secui, 15 IX 1975, F.I.  
*Stenus cicindeloides* (Schaller, 1783) – 1 ex. Prunet, 21 VII 1975, F.I.

### PAEDERINAE Fleming, 1821

#### Paederini Fleming, 1821

##### *Paederus* Fabricius, 1775

*Paederus balcanicus* Koch, 1938 – 1 ♀ Turnu-Severin, 18 V 1981, B.E.

*Paederus fuscipes* Curtis, 1826 – 1 ex. Craiova, 10 VII 1971, F.I.; 1 ex. Danube Delta, 9 VI 1977, B.E.; 2 ex. Desa, 1 IX 1981 și 5 VIII 1982, C.C.; 1 ex. Segarcea, 24 IX 1982, V.A.; 1 ex. Turnu-Severin, 15 IV 1983, B.E.; 1 ex. Malovăț, 13 IV 1984, B.E.

*Paederus littoralis* Gravenhorst, 1802 – 1 ex. Novaci, 8 IX 1963; 1 ex. Craiova, 23 V 1983.

### *Lathrobium* Gravenhorst, 1802

*Lathrobium fulvipenne* (Gravenhorst, 1806) – 1 ♂, Melinești, 1 IX 1979, F.I.

### STAPHYLININAE Latreille, 1802

#### Xantholinini Erichson, 1839

##### *Gauropterus* Thomson, 1860

*Gauropterus fulgidus* (Fabricius, 1787) – 1 ex. Craiova, 30 II 1964; 1 ex. Dubova, 8 V 1984, B.E.

##### *Xantholinus* Dejean, 1821

*Xantholinus longiventris* Heer, 1839 – 1 ♂ Craiova-Obedeau, 30 IX 1974, F.I.

#### Staphylinini Latreille, 1802

**Philonthina Kirby, 1837****Philonthus** Stephens, 1829

*Philonthus addendus* Sharp, 1867 – 1 ♂ Galbenu Valley, 9 VIII 2005, C.C.

*Philonthus alpinus* Eppelsheim, 1875 – 2 ♂♂, 3 ♀♀, Galbenu Valley, 10 VIII 2005, C.C.

*Philonthus carbonarius* (Gravenhorst, 1802) – 1 ♀ Craiova-Obedeau, 30 IX 1973, F.I.; 3 ♀♀ Craiova, 10 V 1975 și 20 V 1975, F.I.

*Philonthus cochleatus* Scheerpeltz, 1937 – 2 ♀♀ Segarcea, 4 X 2001, C.C.

*Philonthus cognatus* Stephens, 1832 – 1 ♂ Craiova-Obedeau, 30 IX 1974, F.I.

*Philonthus concinnus* (Gravenhorst, 1802) – 1 ♂ Verbicioara, 16 V 1951, F.I.

*Philonthus confinis* Strand, 1941 – 3 ♂♂, 2 ♀♀ Galbenu Valley, 10 VIII 2005, C.C.

*Philonthus cruentatus* (Gmelin, 1790) – 1 ♂, 2 ♀♀ Galbenu Valley, 10 VIII 2005, C.C.

*Philonthus discoideus* (Gravenhorst 1802) – 1 ♀ Craiova, 5 VI 1964; 1 ♂ Răcari, 21 VI 2000, C.C.

*Philonthus laminatus* (Creutzer, 1799) – 1 ♀ Bahna Valley, 20 IV 1984, B.E.; 1 ♂ Șimnic, 30 V 2000, C.C.; 1 ♀ Craiova-Botanical Garden, 5 VI 2003, V.A.

*Philonthus parvicornis* (Gravenhorst, 1802) – 3 ♂♂, 1 ♀ Galbenu Valley, 8 VIII 2005, C.C.

*Philonthus pseudovarians* Strand, 1941 – 1 ♀ Segarcea, 4 10 2001, C.C.

*Philonthus rufimanus* Heer, 1839 – 1 ♂ Sohodol Gorges, 22 VII 1996, C.C.

*Philonthus sanguinolentus* (Gravenhorst, 1802) – 1 ♂, 3 ♀♀ Galbenu Valley, 8 VIII 2005, C.C.

*Philonthus spinipes* Sharp, 1874 – 1 ♂ Râncea, 21 VII 1982, V.A.; 1 ♀ Bucovăț, 19 VI 2000, C.C.

*Philonthus splendens* (Fabricius, 1793) – 1 ♂, 2 ♀♀ Galbenu Valley, 9 VIII 2005, C.C.

*Philonthus tenuicornis* Mulsant & Rey, 1853 – 1 ♀, Galbenu Valley, 10 VIII 2005, C.C.

**Rabigus** Mulsant & Rey, 1876

*Rabigus pullus* (Nordmann, 1837) – 1 ♀ Craiova-Obedeau, 10 V 1964, F.I.; 10 ♀♀ și 5 ♂♂ 30 IX 1974, F.I.

**Staphylinina Latreille, 1802****Creophilus** Leach, 1819

*Creophilus maxillosus* (Linnaeus, 1758) – 1 ♂ Craiova, 7 VI 1951; 1 ♀ Craiova-Obedeau, 25 V 1975, F.I.; 1 ♀ Mamaia, 2 VIII 1982, V.A.

**Ontholestes** Ganglbauer, 1895

*Ontholestes murinus* (Linnaeus, 1758) – 1 ex. Șimnic, 13 IV 1981, C.C.; 4 ♀♀, 3 ♂♂ Galbenu Valley, 10 VIII 2005, C.C.

**Platydracus** Thomson, 1858

*Platydracus chalconcephalus* (Fabricius, 1801) – 1 ♀ Bratovoesti, 10 V 2004, L.N.

*Platydracus stercorarius* (Olivier, 1795) – 1 ex. Craiova, 15 IV 1971, F.I.

**Staphylinus** Linnaeus, 1758

*Staphylinus caesareus* Cederhjelm, 1798 – 1 ♂ Bârsești, 10 V 1963; 1 ♂ Sohodol Gorges, 17 VI 1964; 1 ♀ Baia de Fier, 5 V 1968; Craiova, 1 ♂ 13 VI 1968 1 ♂ 20 V 1982, 1 ♀ 1 V 1996, C.C. și 1 ♂ 7 VI 1996, C.C.; 1 ♂, 1 ♀, Tismana, 22 VIII 1992, 1 ♂ Bratovoesti, 10 V 2004, L.N.

*Staphylinus dimidiaticornis* Gemminger, 1851 – 1 ♂ Craiova, 10 X 1975, F.I.

**Ocypus** Leach, 1819

*Ocypus nitens* (Schränk, 1781) – 1 ♂ Turnu-Severin, 5 IX 1867; 2 ♂♂ Craiova, 7 VI 1996, C.C.

*Ocypus ophthalmicus ophthalmicus* (Scopoli, 1763) – 6 ♂♂, 1 ♀ Ciuperceni, 26 IX 1979; 2 ♂♂ Leu, 3 V 2004, L.N.

**Tasgius** Stephens, 1829

*Tasgius ater* (Gravenhorst, 1802) – 1 ex. Mischii, 10 VI 2004, F.G.

*Tasgius pedator* (Gravenhorst, 1802) – 2 ♂♂ Negoii, 7 VI 1992.

**Quediina Kraatz, 1857****Astrapaeus** Gravenhorst, 1802

*Astrapaeus ulmi* (Rossi, 1790) – 1 ex. Vodița Valley, 20 V 1984, B.E.; 1 ex. Malovăț, 13 IV 1984, B.E.; 1 ♀ Craiova-park, 24 VI 2003, V.A.

**Quedius** Stephens, 1829

*Quedius curtipennis* Berhauer, 1908 – 1 ♂ Ieșelnița, 7 VIII 1984, B.E.

*Quedius molochinus* (Gravenhorst, 1806) – 1 ♂ Craiova, 15 IV 1867.

**TACHYPORINAE** MacLeay, 1825**Tachyporini** MacLeay, 1825**Tachyporus** Gravenhorst, 1802

*Tachyporus hypnorum* (Fabricius, 1775) – Prunet 1

**Tachinus** Gravenhorst, 1802

*Tachinus lignorum* (Linnaeus, 1758) – 5 ♂♂, 6 ♀♀, Segarcea, 4 10 2001, C.C.

**ALEOCHARINAE** Fleming, 1821

**Autaliini** Thomson, 1859

**Autalia** Leach, 1819

*Autalia rivularis* (Gravenhorst, 1802) – 5 ex. Galbenu Valley, 9 VIII 2005, C.C.

**Falagriini** Mulsant & Rey, 1873

**Falagria** Leach, 1819

*Falagria splendens* Kraatz, 1858 – 1 ex. Craiova-Obedeau, 1 V 1973, F.I.

**Athetini** Casey, 1910

**Nehemitropia** Lohse, 1971

*Nehemitropia lividipennis* (Mannerheim, 1830), 1 ♀ Craiova-Obedeau, 11 VIII 1974, F.I.

**Aleocharini** Fleming, 1821

**Aleochara** Gravenhorst, 1802

*Aleochara breiti* Ganglbauer, 1897 – 1 ♂ Craiova-Obedeau, 1 V 1973, F.I. The species is mentioned for the first time in the Romanian fauna (Fig. 1 A, B, C).

*Aleochara intricata* Mannerheim, 1830 – 3 ♂♂ Galbenu Valley, 10 VIII 2005, C.C.

*Aleochara lanuginosa* Gravenhorst, 1802 – 1 ♂ Galbenu Valley, 9 VIII 2005, C.C.

*Aleochara tristis* Gravenhorst, 1806 – 1 ♀ Segarcea, 4 X 2001, C.C.

The small rove beetles collection contains, besides ubiquitous species like *Xantholinus longiventris* Heer, *Tachyporus hypnorum* (Fabricius), *Lathrobium fulvipenne* (Gravenhorst), *Platystethus arenarius* (Geoffroy), *Aleochara lanuginosa* Gravenhorst, *Autalia rivularis* (Gravenhorst) and eurytopic species (most of them), some stenotopic species: *Oxytelus piceus* (Linnaeus) and *Philonthus spinipes* Sharp – coprophilous species, *Stenus cicindeloides* (Schaller), *Paederus balcanicus* Koch and *Paederus fuscipes* Curtis - hygrophilous, paludicolous species, *Philonthus rufimanus* HEER and *Rabigus pullus* (Nordmann) - hygrophilous, ripicolous species, *Falagria splendens* Kraatz – humicolous species and *Aleochara breiti* Ganglbauer – microcavernicolous species.

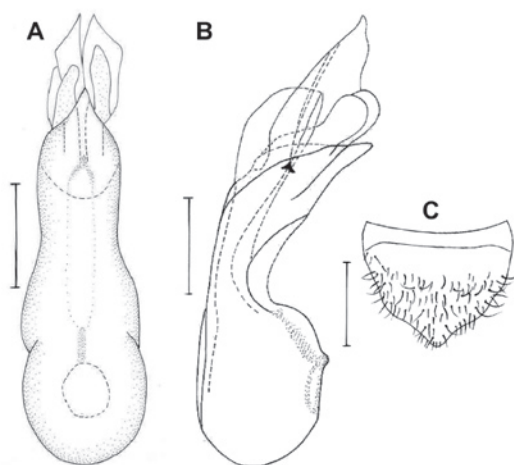
*Aleochara breiti* Ganglbauer, 1897 is a new record in Romanian fauna, thus the number of *Aleochara* species being now 27. BERNHAUER & SCHEERPELTZ (1926), mentioned the distribution of this species for Central Europe and Bulgaria. AD. HORION (1967) gave the distribution of *Aleochara breiti* for the south-east of Central Europe, in the Pannonic steppe: Hungary, ex-Czechoslovakia and Austria, near or inside holes of *Spermophilus citellus* L.. BERNARD STANIEC (1992) recorded for the first time the presence of *Aleochara breiti* in two localities from the S-E of Poland, these localities being the northernmost collecting sites of the species at that moment. The specimens were observed near or inside holes of *Spermophilus suslicus* (Güldenstaedt).

**Acknowledgements**

Thanks to Dr. VOLKER ASSING (Germania) for the publications regarding *Aleochara breiti*. Thanks to Mrs. AURORA DINU for the drawings in China ink. Thanks to Mr. Alexandru IFTIME for checking the English translation.

**REFERENCES**

- ASSING V. & SCHÜLKE M. 2001. Supplemente zur mitteleuropäischen Staphylinidenfauna (Coleoptera, Staphylinidae). II Entomol. Blätt. **97**(2-3): 121-176.
- BERNARD S. 1992. *Aleochara breiti* Ganglbauer, 1897 (Coleoptera, Staphylinidae) – nowy dla fauny Polski przedstawiciel kusakowatych. Wiad En-



**Fig. 1.** *Aleochara breiti* Ganglbauer. A, B – median lobe of aedeagus in ventral and lateral view. Scale: 0.5 mm; C – 6th sternit (male). Scale: 0,2 mm.

- tomol. **11** (3): 149-153.
- BERNHAEUER M. & SCHEERPELTZ O. 1926. Staphylinidae VI. In: Coleopterorum Catalogus. Pars 82: 500-988.
- HERMAN L. H. 2001. Catalogue of the Staphylinidae (Insecta: Coleoptera). 1758 to the end of the second millennium. Bulletin of the American Museum of Natural History 265 (1-7): 1-4218
- HORION, AD. 1967. Faunistik der mitteleuropäischen Käfer. Staphylinidae. 3. Habrocerinae bis Aleo-  
chgarinae (Ohne Subtribus Athetae). 11: 24 + 1-419. Überlingen-Bodensee: P. C. W. Schmidt.
- NEWTON A. F. & M. K. THAYER 1992. Current Classification and Family-Group Names in Staphyliniformia (Coleoptera). Fieldiana: Zoology, (new series). **67**: 3-92.
- STAN MELANIA 2004. Checklist of Staphylinids (Coleoptera: Staphylinidae) of Romania. Travaux du Museum d'Histoire Naturelle "Grigore Antipa". **46**: 83-108.

Melania STAN  
"Grigore Antipa" National Museum of  
Natural History, Department of Terrestrial  
Fauna, Sos. Kiseleff no. 1, Bucharest, RO-  
011341, ROMANIA  
E-mail: mstan@antipa.ro

Cornelia CHIMIȘLIU  
Oltenia Museum, Natural History Dept.,  
Craiova, Str. Popa Șapcă, no. 8,  
Craiova, RO-200000,  
E-mail: chimisliu\_cornelia@yahoo.com

Received: 14.11.2005

Accepted: 30.11.2005

Printed: 28.12.2005